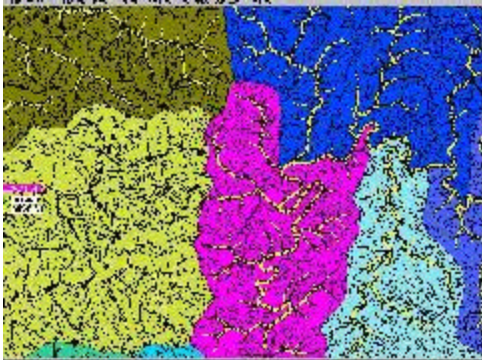
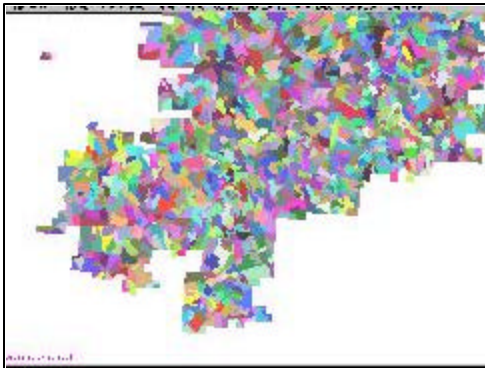


## Spatial Planning for Integrated Forest Landscapes

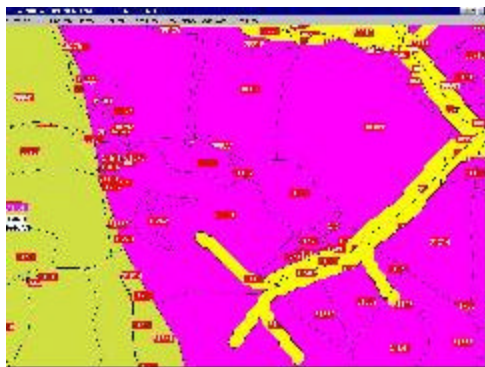
### Example Outputs:



Watersheds, Polygons, and Riparian Zones



Timber Stands Layer



Individual Polygons Representing Stands or Parts of Stands

### Main Features of the Spatial Planning Approach

- Landscape planning for sustainable ecosystems
- Custom designed for specific project goals
- Analysis of environmental tradeoffs with spatial dimensions
- State of the art techniques of computerized mapping and analysis

### Opportunities from this planning approach

- Integrate reserve goals into forest management planning
- Balance working forest needs with landscape-level conservation priorities
- Develop visual (fully mapped) alternatives
- Demonstrate possibilities for integration of ecological reserve lands with well managed commercial forest

### Where this approach is being used

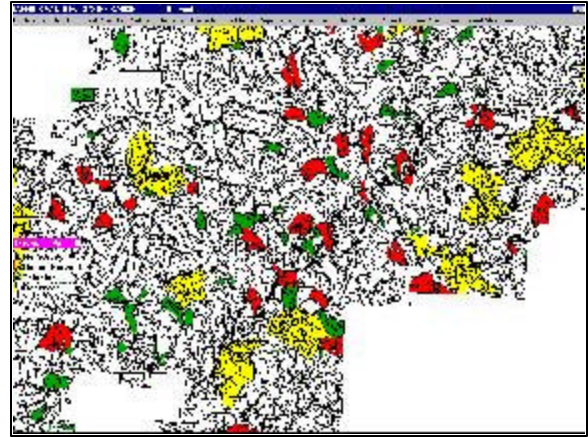
- Umpqua River Basin Project
- MacDonald Forest of Oregon State University
- State Forestlands of Oregon, including the Elliott Forest
- Boise Cascade, Weyerhaeuser, Willamette Industries, and Washington DNR (state) all use spatial scheduling, although they are not as oriented to environmental goals

### Steps in the approach

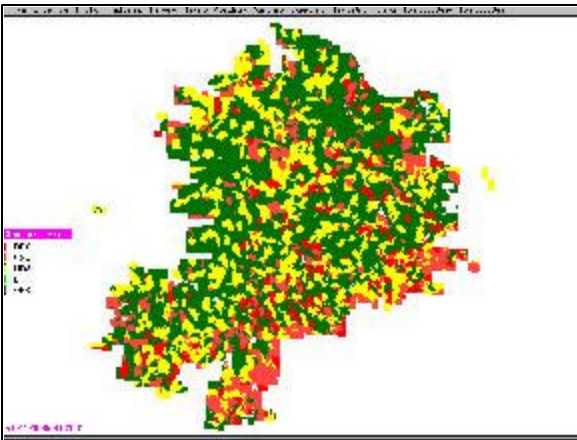
- Identify and quantify goals
- Assess availability of GIS and inventory data
- Accumulate and add data layers as needed
- Develop planning team including technical experts and stakeholders
- Classify the land in a way that permits addressing goals and issues (riparian, upslope, steep, flat, etc)
- Identify silvicultural alternatives for range of forest stands then model in conjunction with goals
- Generate spatially explicit computer model solution across landscape and ownerships over time



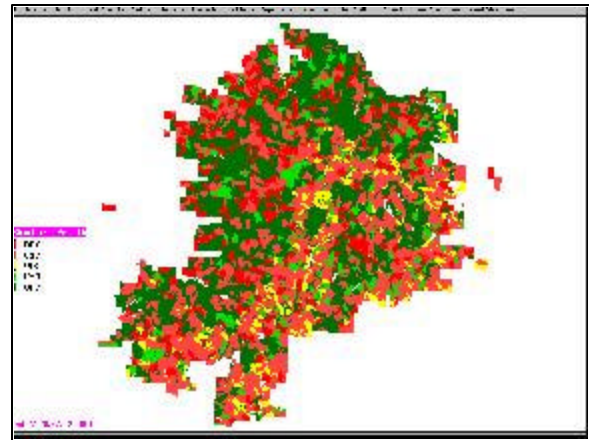
Harvest Settings Layer



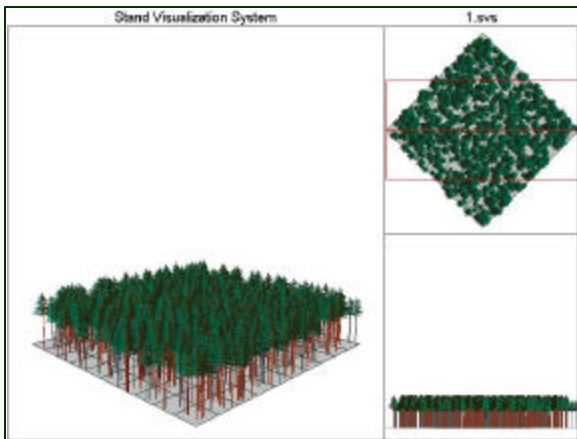
Harvest Units Year 145-150



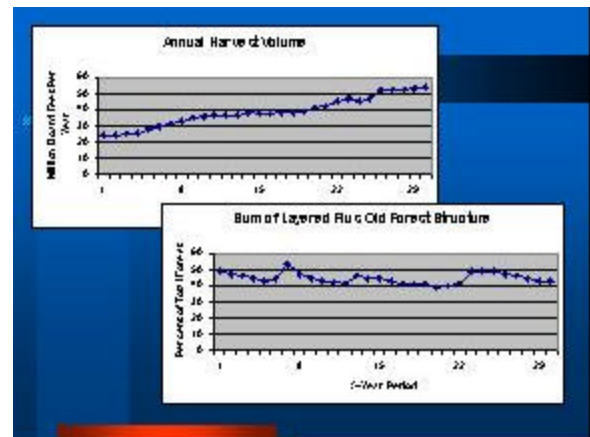
Forest Structure Year 5



Forest Structure Year 75



Simulated Growth 70 Years After Treatment



Forest Habitat Developed and Annual Harvest Volumes Available