

---

# Interforest Carbon Offset Services

There is an emerging market for services that remove CO<sub>2</sub> from the atmosphere and sequester it as carbon in biomass and soils. CO<sub>2</sub> is widely accepted to contribute to global climate change through its impact as a “greenhouse gas.” As the global community, nations and states begin to regulate CO<sub>2</sub> emissions – primarily caused by energy production and transportation – major emitting industries are seeking ways to reduce their CO<sub>2</sub> emission footprint.

Government initiatives around the world include “cap and trade” programs that create both a hard incentive to reduce emissions and a flexible mechanism to trade “carbon credits.” The trading of credits and the acceptance of carbon offset (or “sink”) credits are ways to achieve economically efficient emission reductions. Carbon offset credits can be generated through projects that absorb (or sequester) atmospheric carbon through forestry, agriculture or other land-use activities.

***INTERFOREST can help landowners determine if and how carbon sequestration can increase the value of their land and help generate more profit from forestry and forest conservation activities.***

The atmospheric carbon sequestered by forest trees and soils can offer a low cost alternative to industrial emissions reductions activities. As a result of the flexible trading mechanisms, forestland owners have a new opportunity to generate more value from their forestry activities by creating and selling carbon offset credits. Those landowners who get involved in this market early but carefully will benefit the most from carbon sequestration opportunities.

***INTERFOREST can assist at all stages of carbon project development***

## ***Stages in Project Creation - INTERFOREST Carbon Services***

**Opportunity Assessment** – INTERFOREST can evaluate current practices and determine if the opportunity for a carbon sequestration, or “sink,” project would be financially valuable. This provides a rapid assessment of the potential for the landowner to gain carbon credits given their current situation and management methods.

**Project Creation** – Because of the complexity of carbon sequestration certification and the changing national and global standards, landowners must be cautious designing a carbon project. INTERFOREST can provide project definition and planning services that allow the client to create a carbon project as an additional element to their existing forest management objectives. INTERFOREST is one of the world’s leading experts on integrating diverse forest management goals.

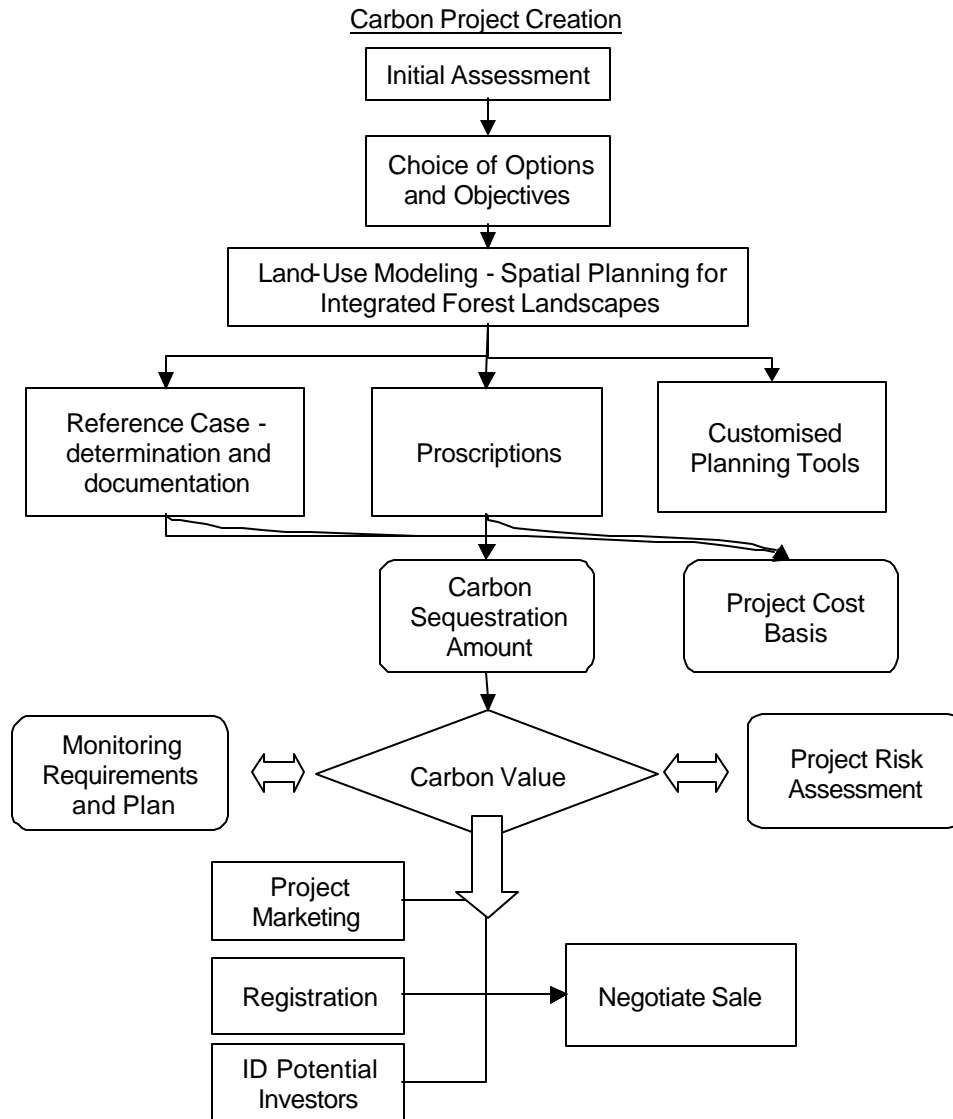
**Baseline Establishment** – All carbon projects require a baseline state to be adequately measured and documented. The establishment and documentation of baseline or “reference” conditions is an auditing and technical activity for which INTERFOREST has documented strengths.

**Certification** – INTERFOREST does not currently provide certification services but can help the landowner prepare for carbon certification and arrange for a third party auditor.

**Monitoring** – INTERFOREST has established itself as a high quality science-based forestry organization. As a trusted player in the market, INTERFOREST provides its clients with state-of-the-art carbon monitoring services and trains forestry staff and management to conduct required monitoring.

**Brokering** – INTERFOREST will assist our clients to identify and negotiate with a top class brokering service or, in some circumstances we will broker the sale for the client.

---



Some details on how INTERFOREST can help with Carbon Offset Project development.

- *Forestland property and regional computer-assisted carbon and land-use planning* using multiple criteria such as production, wildlife, water resources, and additional management goals. This planning activity can be conducted separately or as part of the carbon project preparation phase. INTERFOREST will be using the “Spatial Planning for Integrated Forest Landscapes” computer toolset developed by Dr. John Sessions- INTERFOREST Partner.

- *Carbon Project Preparation*
  - o Reference case definition and documentation
  - o Spatial Planning, Proscriptions and associated customized tools
  - o Monitoring plan
  - o Registration with national or international registrars
- *Carbon project financing* – matching appropriate buyers and sellers
- *Certification* of carbon projects (pending creation of certification body.)

For more information contact: [carbon@iforest.com](mailto:carbon@iforest.com) or call 203 483-4316